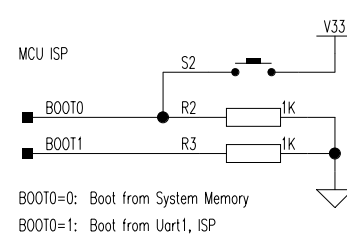
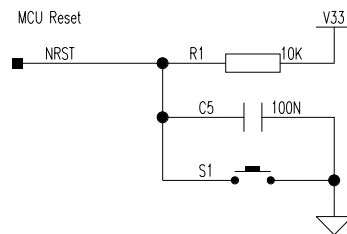
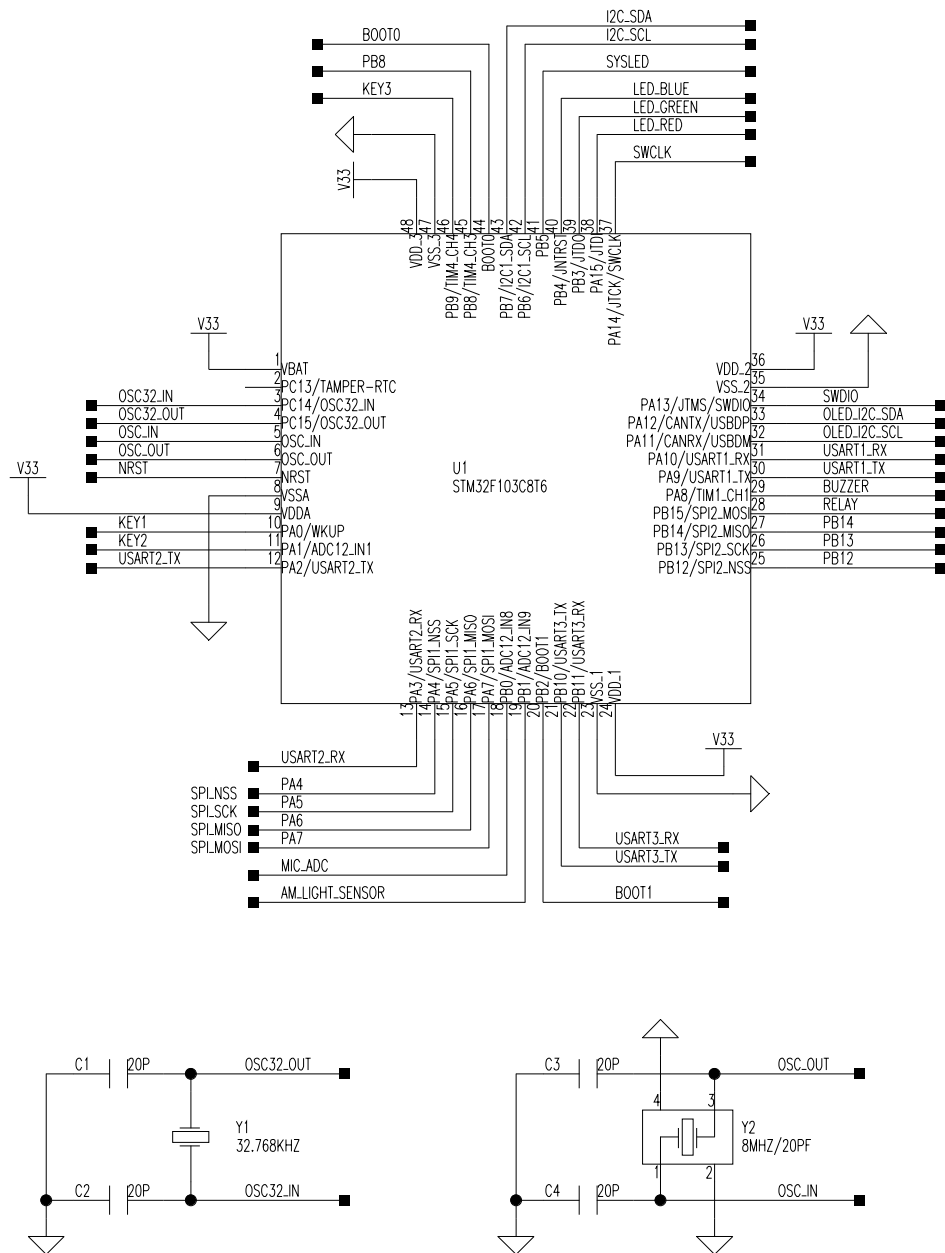
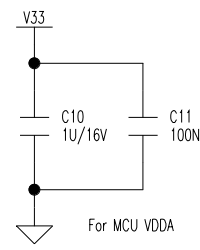
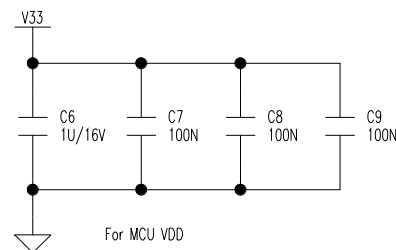
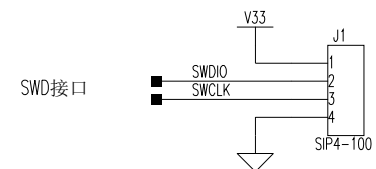
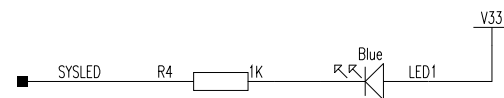


MCU电路

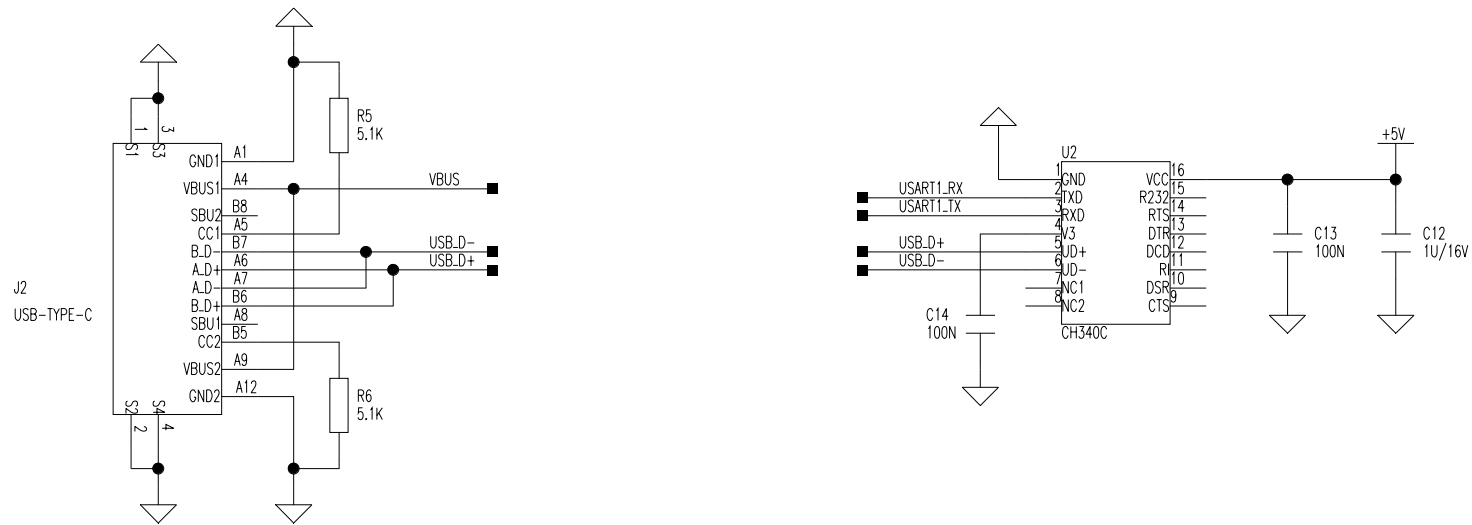


系统运行指示

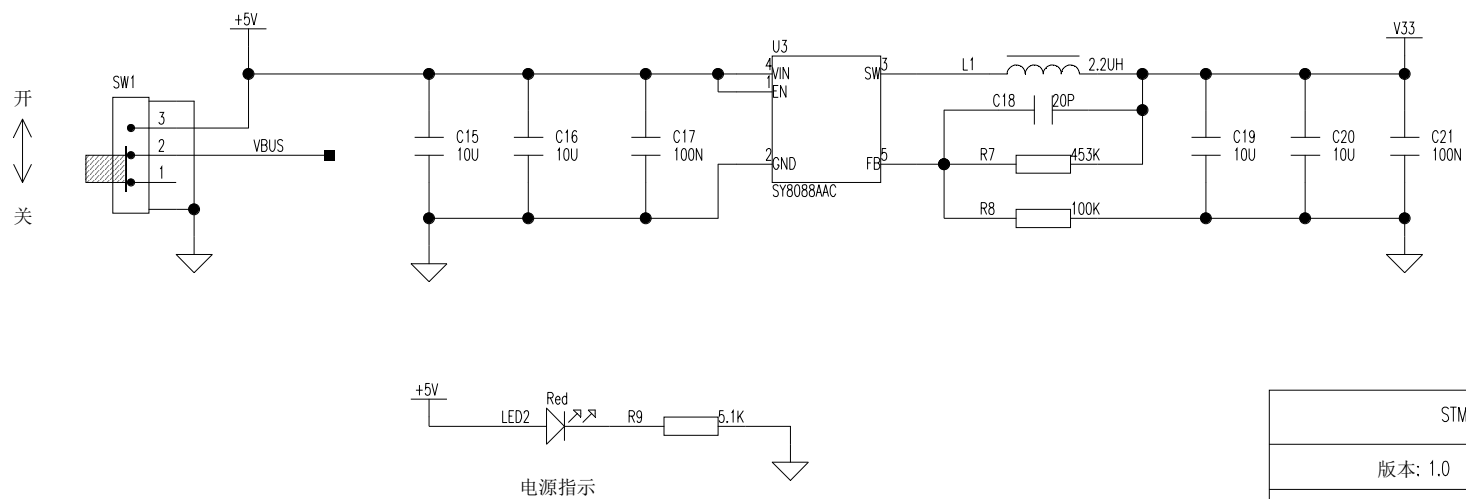


STM32物联网开发板	
版本: 1.0	页码: 2/7
凌云物联网智科实验室	日期: 2019.11.18

USB转串口



电源



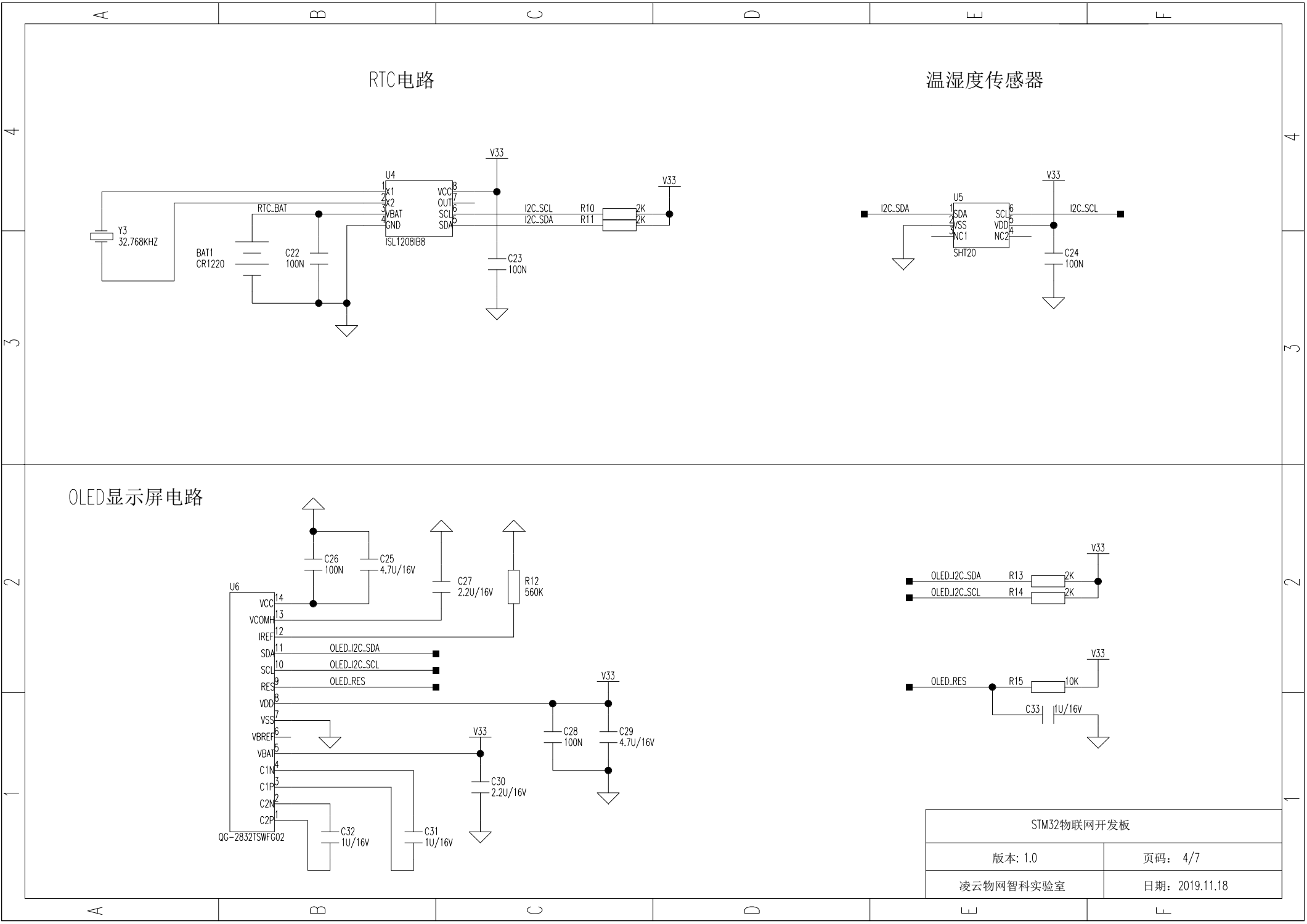
STM32物联网开发板

版本: 1.0

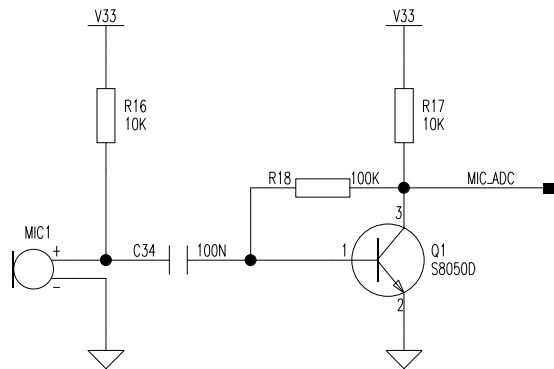
页码: 3/7

凌云物联网智科实验室

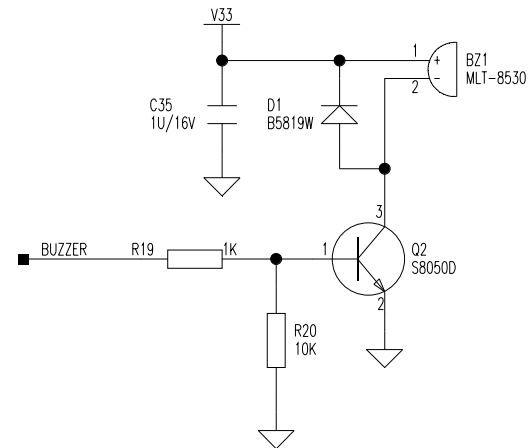
日期: 2019.11.18



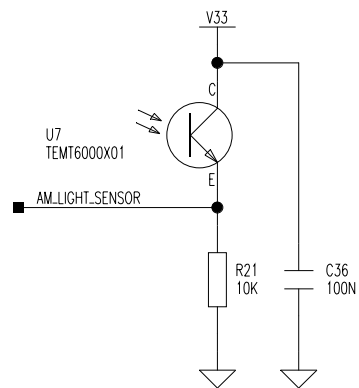
声音输入



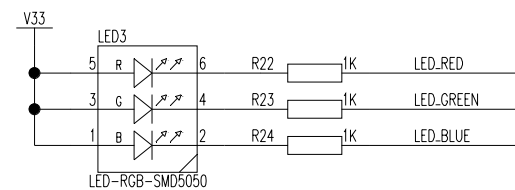
蜂鸣器电路



环境光传感器



红绿蓝三色光电路



STM32物联网开发板

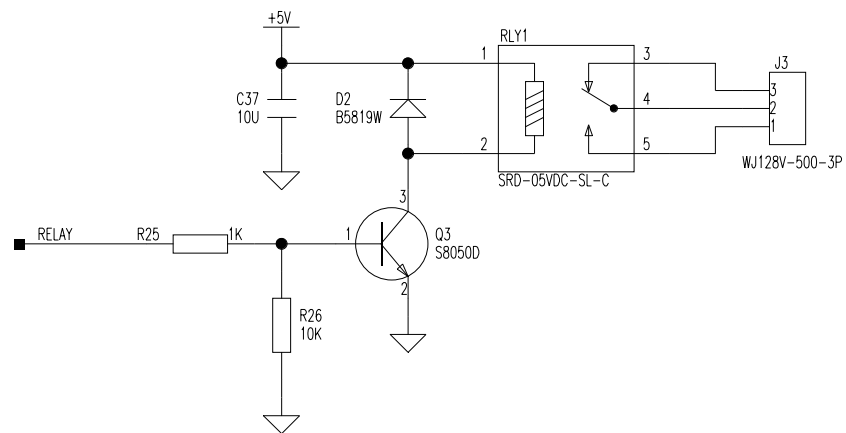
版本: 1.0

页码: 5/7

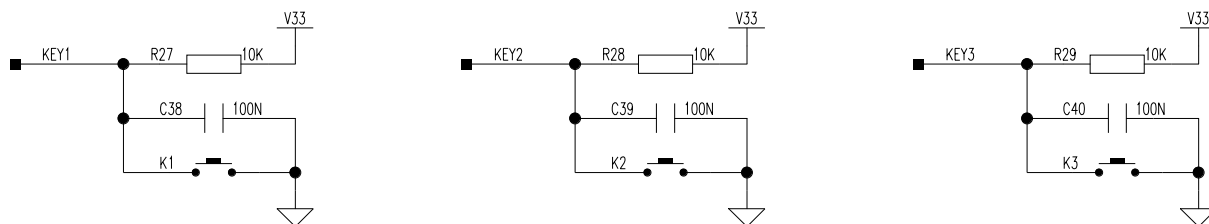
凌云物联网智科实验室

日期: 2019.11.18

继电器电路



按键电路



STM32物联网开发板

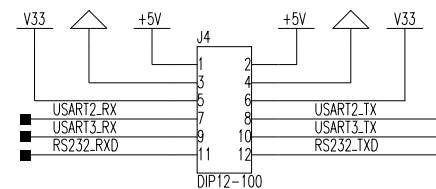
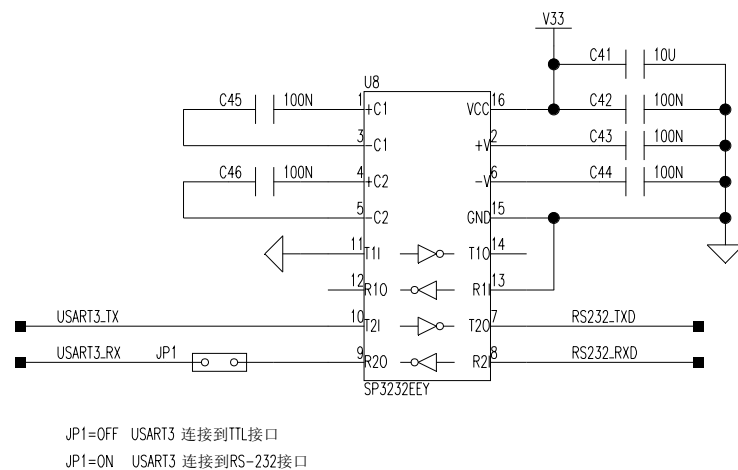
版本: 1.0

页码: 6/7

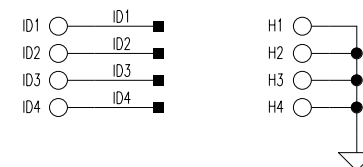
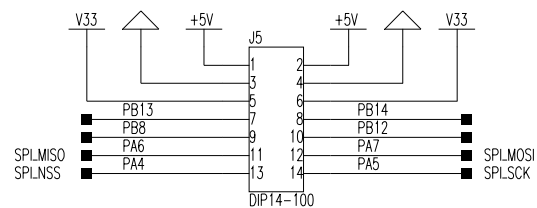
凌云物联网智科实验室

日期: 2019.11.18

串口电路



扩展IO



STM32物联网开发板

版本: 1.0

页码: 7/7

凌云物联网智科实验室

日期: 2019.11.18