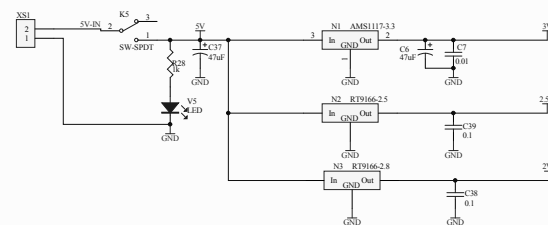
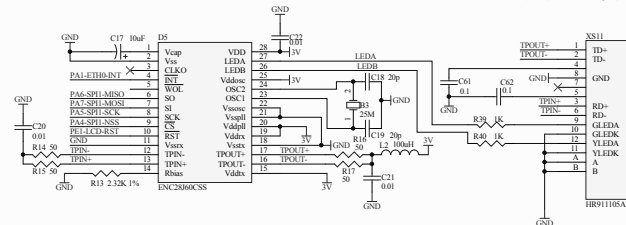


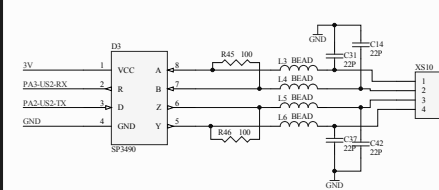
电源模块



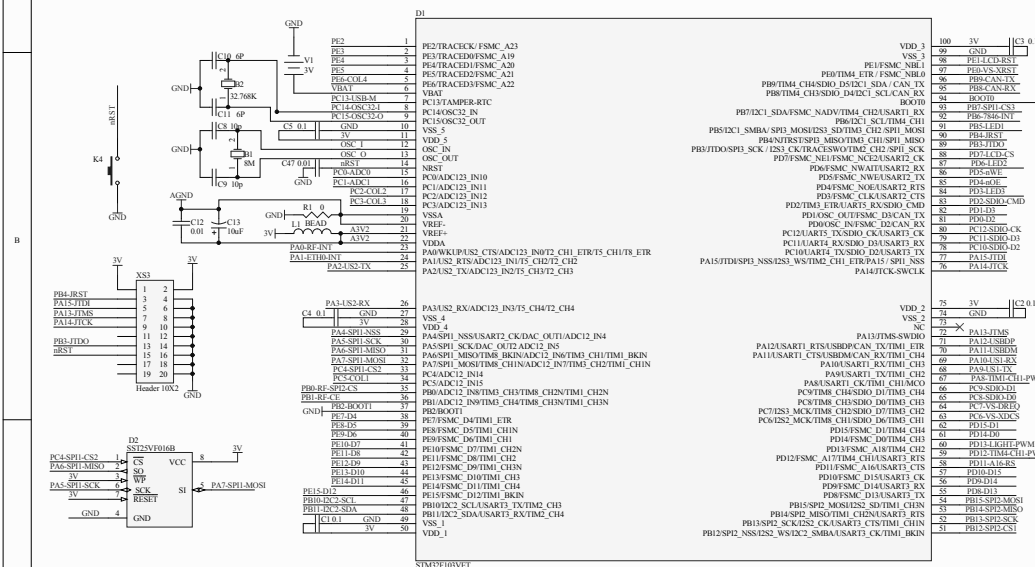
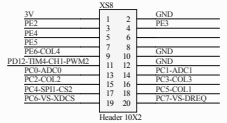
10M以太网接口



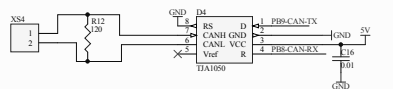
RS485 接口



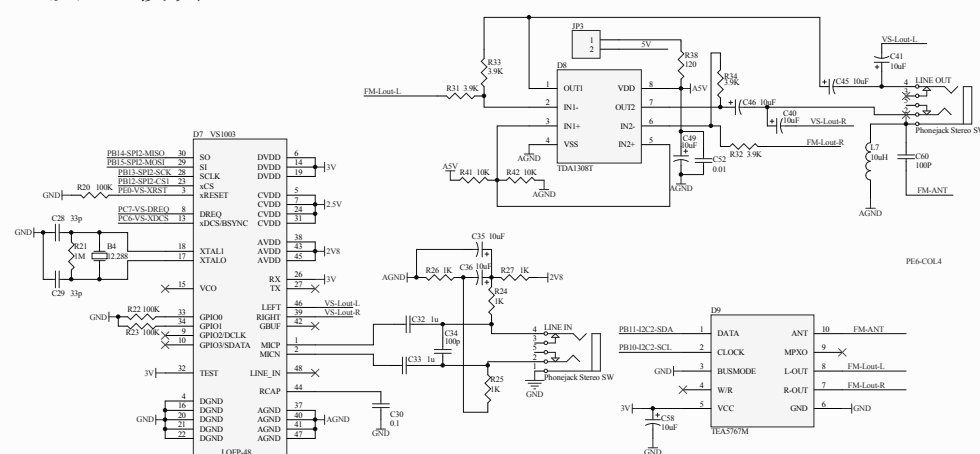
OV7670+AL422摄像头接口



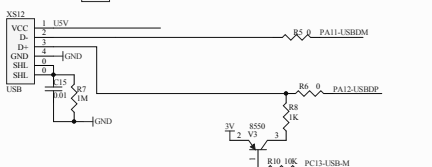
CAN总线接口



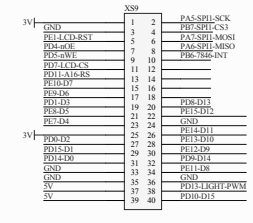
FM及MP3模块



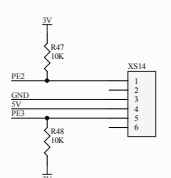
USB接口



TFT接口



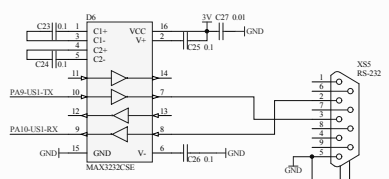
PS/2接口



SPI2/I2S2接口---可用于NRF24L01及加速度传感器及I2S外设

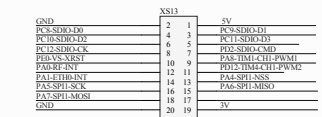
GND	X5
PC6-VS-XDCS	1
PB13-SPI2-SCK	3
PB14-SPI2-MISO	5
PB10-I2C2-SCL	7
	9

RS-232通信

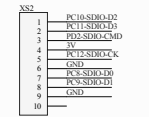


MCU

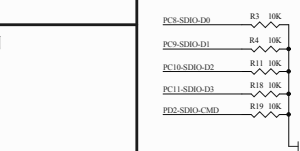
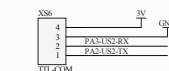
通用IO接口



MICRO SD接口

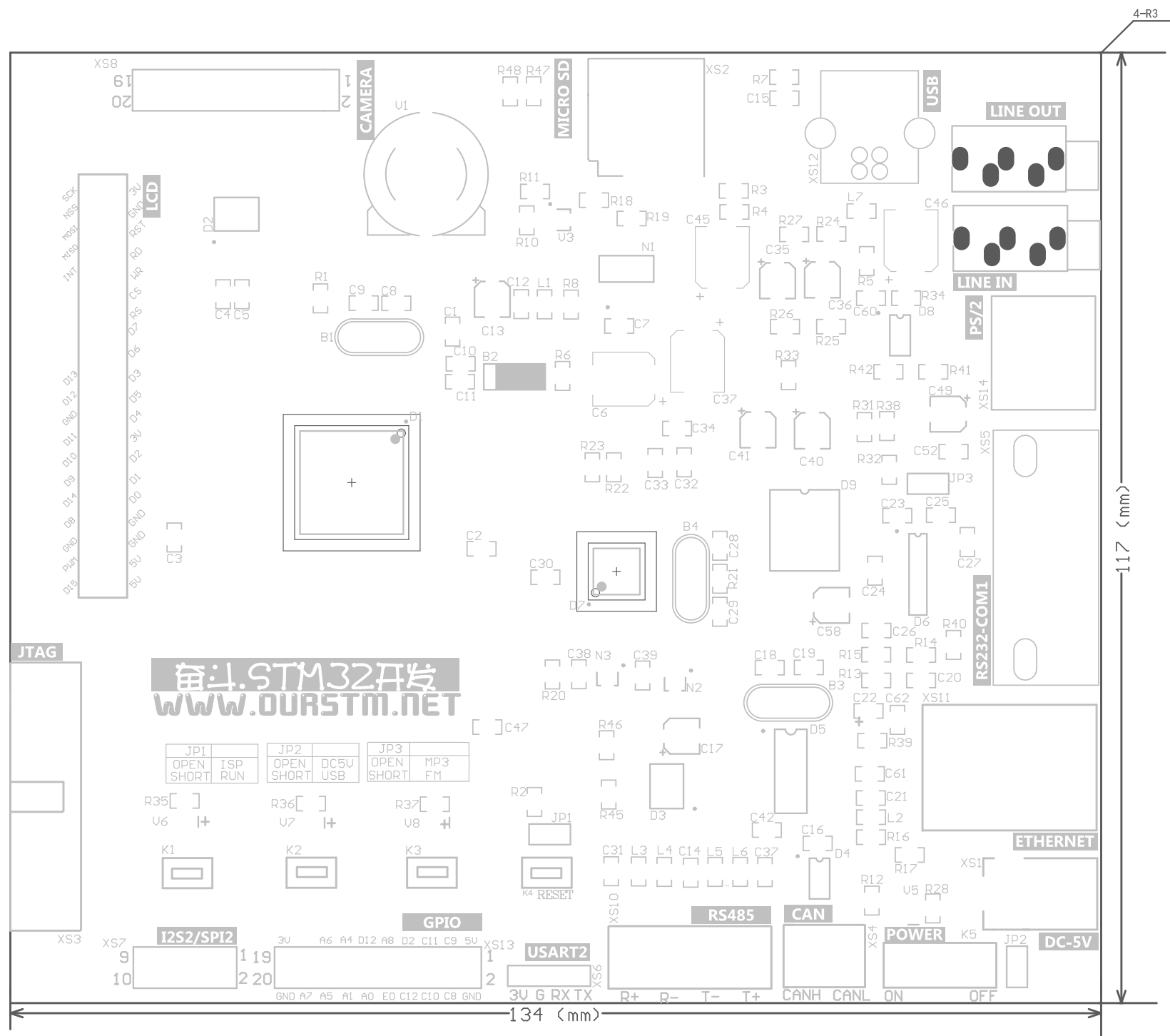


USART2 TTL通信接口



Title	STM32F103VET6奋斗版开发板
-------	---------------------

Size A2	Number	Revision V5
Date: 2013/3/21	Sheet of	
File: F:\STM32-FD-V3-SSI-V5-130216.S	10/06 By:	



Comment	Description	Designator	Footprint	LibRef	Quantity
8M	Crystal Oscillator	B1		XTAL	1
32.768K	Crystal Oscillator	B2	CCC	XTAL	1
25M	Crystal Oscillator	B3		XTAL	1
12.288		B4	XTAL_socket	XTAL1	1
0.1	Capacitor	C1, C2, C3, C4, C5, C23, C24, C25, C26, C30, C38, C39, C61, C62	0805	AUTOATT.S01_33p_17, CAP	14
47uF	Polarized Capacitor (Surface Mount)	C6, C37	LQC47	Cap Pol3	2
0.01	Capacitor	C21, C22, C27, C47, C63	0805	AUTOATT.S01_33p_17, CAP	10
10p		C8, C9	0805	AUTOATT.S01_33p_17	2
6P		C10, C11	0805	AUTOATT.S01_33p_17	2
10uf	Polarized Capacitor (Surface Mount)	C13, C17, C35, C36, C40, C41, C49, C58	CC2	Cap Pol3	8
22P		C14, C31, C37, C42	0805	AUTOATT.S01_33p_17	4
20p		C18, C19	0805	AUTOATT.S01_33p_17	2
33p	Capacitor	C28, C29	0805	CAP	2
1u		C32, C33	0805	AUTOATT.S01_33p_17	2
100p		C34, C60	0805	AUTOATT.S01_33p_17	2
10uF	Polarized Capacitor (Surface Mount)	C45, C46	LQC47	Cap Pol3	2
STM32F103VET		D1	LQFP100_L	STM32F103VET	1
SST25VF016B	1Kbit Serial 1-wire Bus EEPROM	D2	8S2	M24C01WMN6	1
SP3490		D3	8S2	SP3490	1
TJA1050	1ppm/pp, Low-Noise, +2.5V Voltage Reference	D4	D008	MAX6325ESA	1
ENC28J60CSS		D5	SSOP-28	enc28j60	1
MAX3232CSE	3.0V TO 5.5V, Low-Power, up to 1Mbps, True RS-232 Transceiver Using Four 0.1-wire External Capacitor	D6	SO-G16	MAX3232CUE	1
VS1003		D7	LQFP48_L	VS1003	1
TDA1308T		D8	D008	PT2308	1
TEA5767M		D9	TEA5767	TEA5767M	1
	Header, 2-Pin	JP1, JP2, JP3	HDR1X2	Header 2	3
	Switch	K1, K2, K3, K4	a3X6	SW-PB	4
SW-SPDT	SPDT Subminiature Toggle Switch, Right Angle Mounting, Vertical Actuation	K5	SP2T - duplicate	SW-SPDT	1
BEAD		L1, L3, L4, L5, L6	0805	Inductor	6
100uH		L2	0805	Inductor	1
10uH		L7	0805	INDUCTOR	1
Phonejack Stereo SW	3-Conductor Jack with 2 break contacts (normals) and 2 auxiliary make contacts	LINE IN, LINE OUT	ST-3150-5N	Phonejack Stereo SW	2
AMS1117-3.3		N1	SOT223	LM1085	1
RT9166-2.5		N2	SOT-23	LM1085	1
RT9166-2.8		N3	SOT-23	LM1085	1
0	Resistor	R1, R5, R6	0805	Res3	3
1K	Resistor	R2, R8, R24, R25, R26, R27, R28, R35, R36, R37, R39, R40	0805	Res1, Res3	12
10K	Resistor	R3, R4, R10, R11, R18, R19, R41, R42, R47, R48	0805	Res3	10
1M	Resistor	R7, R21	0805	Res3	2
120	Resistor	R12, R38	0805	Res3	2
2.32K	Resistor	R13	0805	Res3	1
50	Resistor	R14, R15, R16, R17	0805	Res3	4
100K	Resistor	R20, R22, R23	0805	Res3	3
3.9K	Resistor	R31, R32, R33, R34	0805	Res3	4
100	Resistor	R45, R46	0805	Res3	2
3V	Multicell Battery	V1	LI1220_1	Battery	1
8550	PNP General Purpose Amplifier	V3	SOT-23	2N3906	1
LED		V5	CC2012-0805	LED	1
red	Typical RED, GREEN, YELLOW, AMBER GaAs LED	V6, V7, V8	CC2012-0805	LED2	3
DCIN		XS1	DC	CON2	1
Micro SD	Header, 10-Pin	XS2	TF-4an	Header 10	1
Header 10X2	Header, 10-Pin, Dual row	XS3	IDC20	Header 10X2	1
CAN	Header, 2-Pin	XS4	PCBComponent_1 - duplicate	Header 2	1
RS-232		XS5		DB9	1
TTL-COM	Header, 4-Pin	XS6	HDR1X4	Header 4	1
Header 5X2	Header, 5-Pin, Dual row	XS7	HDR2X5	Header 5X2	1
Header 10X2	Header, 10-Pin, Dual row	XS8	HDR2X10	Header 10X2	1
Header 11X2A	Header, 20-Pin, Dual row	XS9	HDR2X20	Header 20X2	1
	Header, 4-Pin	XS10	CH508	Header 4	1
HR911105A		XS11	HR911105A	HR911103A	1
USB	Header, 6-Pin	XS12	USB-B	Header 6	1
CAN	Header, 10-Pin, Dual row	XS13	HDR2X10	Header 10X2	1
	Header, 6-Pin	XS14	BGA56x10	Header 6	1